

IMPORTANT – READ BEFORE MOUNTING!

Heat Sensitive Play Panel

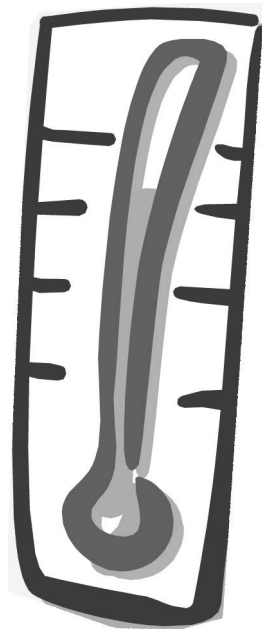
The Heat Sensitive Play Panel contains a temperature-sensitive material behind a tough, abrasion resistant film. When the surface is touched, it responds to the person's body heat by changing color.

The heat sensitive play panels are activated at temperatures between 74 and 83 degrees Fahrenheit. For best performance the ideal room temperature for the play panel is between 68 and 73 degrees.

If Panel surface seems to respond sluggishly, the room temperature may be too cold. If the surface is red, green or blue when not in use the room temperature is too warm.

Mounting Location Guidelines:

- Mount the Panel on an inside wall where the temperature is consistent.
- Avoid mounting the Panel on an outside wall, as this may lower the temperature of the panel.
- Do not mount the Play Panel where it will be in direct sunlight. This will affect responsiveness and shorten the life of the product.



Black — Over 83°F

Blue — 81 to 83°F

Green — 75 to 81°F

Red — 74 to 75°F

Black — Under 74°F

When little hands touch the Panel, the color changes will roughly correspond to those shown on the thermometer at left. At temperatures above 83°F and below 74°F the Panel surface will appear black.

Cleaning the Heat Sensitive Play Panel

Use a soft damp cloth, general purpose cleaner or disinfectant spray to clean the Panel. Do not use cleaners containing ammonia or abrasives. To remove crayon or other difficult stains, we recommend De-Solv-It, Goo Gone, or other multi-purpose cleaner

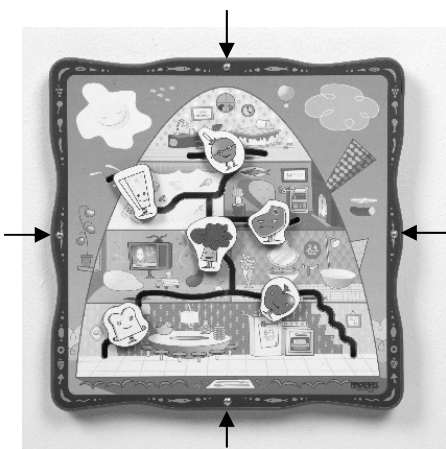


Wall-Mounted Activity

Mounting Guide

Instructions

- All Playscapes Activities use a similar mounting pattern with mounting holes at top and bottom of Activity. For larger Activities, mounting holes are also drilled at sides of Activity.
- Using the hardware provided, secure Activity to wall, making sure the Activity is level. It is strongly recommended that Activities are mounted into wall studs or into drywall using the anchors provided.
- See other side of this sheet for a useful guide on mounting heights for Playscapes Activities.



Example of 4 mounting holes



Example of 2 mounting holes

**If you have questions, please call
Customer Service: 800-248-7529
Email: playscapes@playscapes.com**

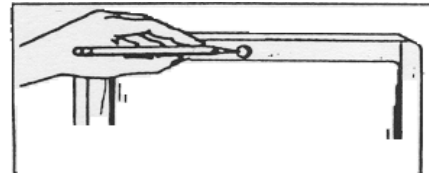
Instructions for Drywall Mounting

Please Note!

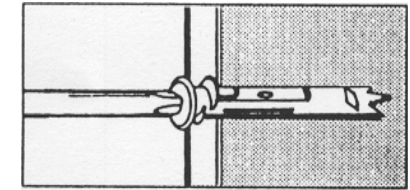
- Read instructions completely before beginning your installation
- These instructions are for drywall mounting
- Do not insert drywall anchors into wall studs

Tools Needed:

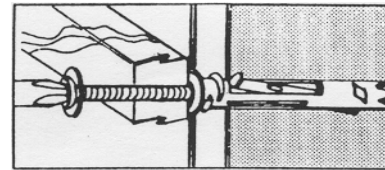
- Pencil
- Hammer
- #2 Phillips Screwdriver



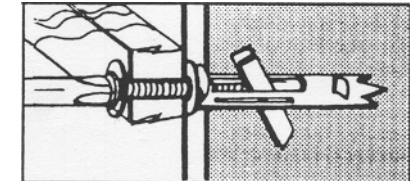
1 Hold Activity up to designated mounting spot. Using a pencil, mark where the TOP screw will be inserted.



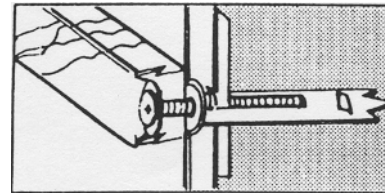
2 Take Activity away from wall. Tap anchor into marked spot and then screw in with #2 Phillips screwdriver until the anchor is flush with wall.



3 Slip washer on screw. Align hole in Activity with hole in anchor. Then insert the screw into frame.



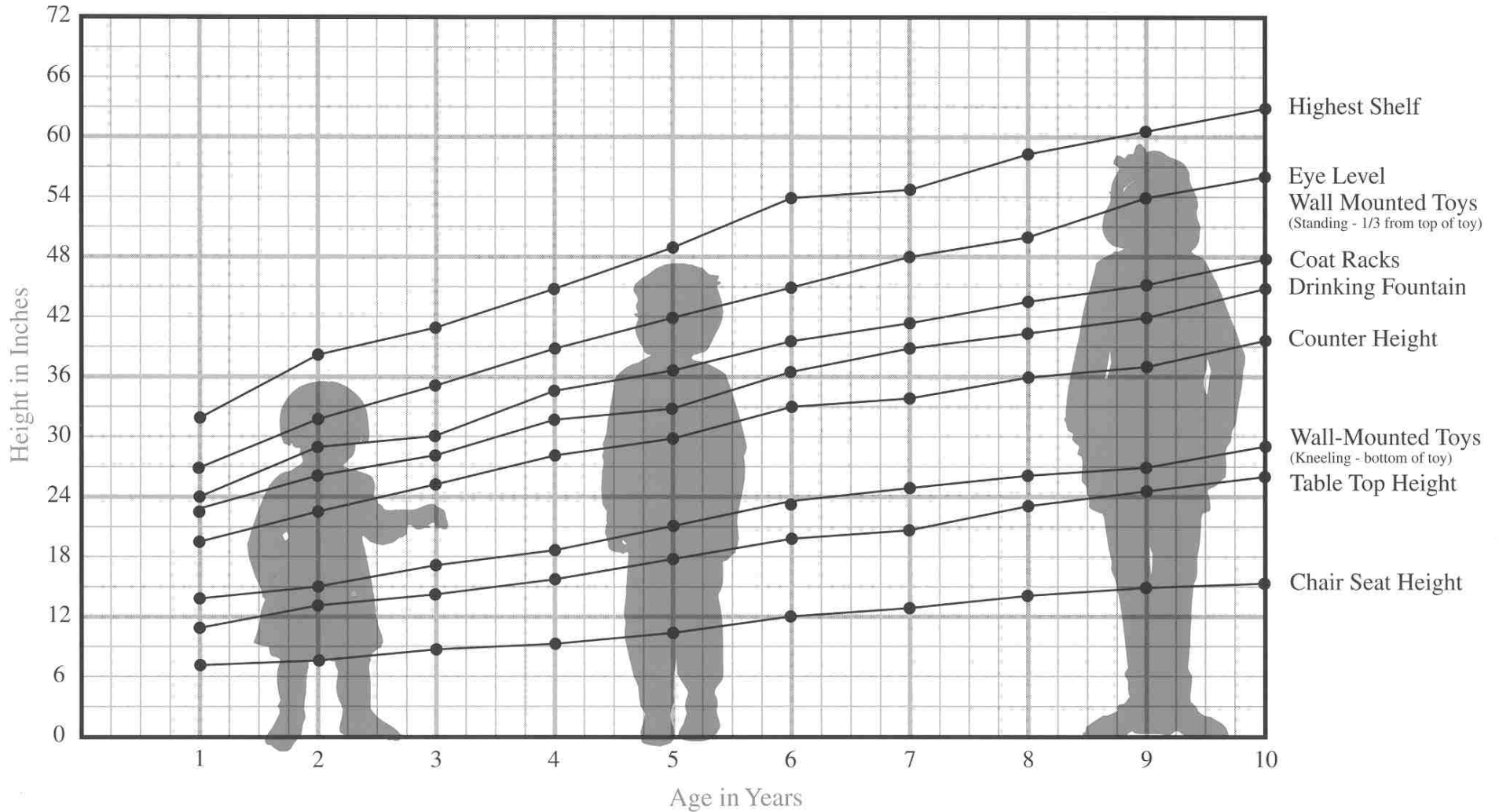
4 As screw turns, clamp engages on the opposite side of wall.



5 Keep turning until almost tight. Do not tighten beyond this point.

Be sure Activity is mounted squarely. When level, use pencil to mark other screw locations. Repeat Step 2 for each screw location. Use top screw as a pivot, swinging Activity to the side as needed to access additional screw locations. Then repeat Steps 3-5 for each screw. Tighten all screws.

Anthropometrics For Children



PLAYSCAPES
CHILDREN'S ENVIRONMENTS

1-800-248-7529